

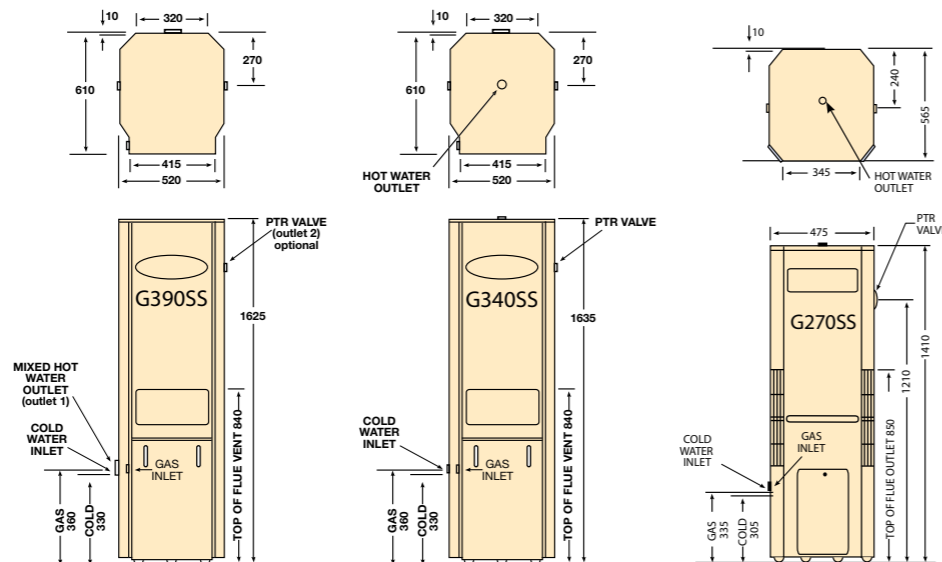


5 Star Gas  
STAINLESS STEEL



## SPECIFICATIONS

|   | G390 SS<br>(WITH MIXING VALVE) | G340 SS                    | G270 SS                    |
|---|--------------------------------|----------------------------|----------------------------|
| Number of people Served                     | 3-6                            | 2-5                        | 2-4                        |
| Model                                       | G390SS                         | G340SS                     | G270SS                     |
| Gas type                                    | Natural                        | Natural                    | Natural                    |
| Cylinder Capacity                           | 155 Litres                     | 155 Litres                 | 130 Litres                 |
| Nominal gas consumption                     | 40 MJ/Hr                       | 40 MJ/Hr                   | 33 MJ/Hr                   |
| AGA Star Rating Index                       | 5 Stars                        | 5 Stars                    | 5 Stars                    |
| Recovery rate at 45°C rise                  | 185 Litres/Hr <sup>2</sup>     | 185 Litres/Hr <sup>2</sup> | 145 Litres/Hr <sup>2</sup> |
| Installation type                           | External only                  | External only              | External only              |
| Pressure & Temperature Relief Valve setting | 1400 kPa/99°C                  | 1400 kPa/99°C              | 1400 kPa/99°C              |
| Max. water supply pressure w/o ECV          | 1120 kPa                       | 1120 kPa                   | 1120 kPa                   |
| Cylinder material                           | stainless steel                | stainless steel            | stainless steel            |
| Water inlet connection                      | Rp 3/4" Female                 | Rp 3/4" Female             | Rp 3/4" Female             |
| Water outlet connection                     | Rp 3/4" Female                 | Rp 1/2" Female             | Rp 1/2" Female             |
| Gas connection                              | 1/2" flared compression        | 1/2" flared compression    | 1/2" flared compression    |
| Warranty (Cylinder) <sup>1</sup>            | 12 years                       | 12 years                   | 12 years                   |
| WaterMark Licence No.                       | WMKA00200                      | WMKA00200                  | WMKA00200                  |
| Overall height                              | 1625mm                         | 1635mm                     | 1410mm                     |
| Width (approx.)                             | 520mm                          | 520mm                      | 475mm                      |
| Depth (approx.)                             | 610mm                          | 610mm                      | 565mm                      |
| AGA Approval No.                            | AGA6114G                       | AGA6114G                   | AGA7477G                   |
| Weight (packaged)                           | 65 kg                          | 64 kg                      | 49 kg                      |



<sup>1</sup> Warranty: 12 years on cylinder, 3 years parts and labour on cylinder, 1 year parts and labour on all other components, when installed in a domestic dwelling. For all other installations, warranty period is one year parts and labour on all components. Warranty applies to product manufactured on or after 09/04/2018. Conditions apply, see the AquaMax warranty set out in the Owner's Guide and Installation Instructions or view at [www.aquamax.com.au](http://www.aquamax.com.au)

<sup>2</sup> Based on cold water temperature of 15°C

<sup>3</sup> Note: AquaMax Stainless Steel Water Heaters are not recommended for installation in some areas. Refer to the AquaMax website for details of areas not recommended and for which product is not covered by warranty.

**Aquamax Australia Pty Ltd** 463-467 Warrigal Road Moorabbin Vic 3189  
Toll Free: 131 031 Sales Ph: 132 552 Sales Fax: 1300 554 821  
Email: [sales@aquamax.com.au](mailto:sales@aquamax.com.au) For more information visit [www.aquamax.com.au](http://www.aquamax.com.au)  
A.B.N. 37 138 189 689

® Registered Trademark of AquaMAX Australia Pty Ltd.  
Materials, product data and specifications subject to change without notice

“Giving you more in  
**Hot Water**”



**12** YEAR  
CYLINDER  
WARRANTY



## STAR PERFORMERS FROM AQUAMAX

AquaMax gas water heaters offer you more than just 5 Star energy efficiency.

With Stainless Steel cylinders across the range they are the preferred choice for homeowners and plumbers alike.

Providing hot water recovery of up to 185 litres per hour, there is an AquaMax model to suit even the largest household.



G390 SS

G340 SS

G270 SS



## OUTSTANDING FEATURES

**5 STAR ENERGY EFFICIENCY**  
to help you save on energy bills

**STAINLESS STEEL CYLINDERS**  
can resist corrosion for longer than conventional enamelled steel cylinders<sup>3</sup>

**12 YEAR CYLINDER WARRANTY<sup>1</sup>**

**HOT WATER RECOVERY FROM 145 TO 185 LITRES AN HOUR<sup>2</sup>**  
to have you back in hot water faster, and also handy in times of heavy hot water demand

**SIGNIFICANTLY LIGHTER**  
than traditional enamelled steel cylinder water heaters, which assists in easier installation

**NO ANODE REQUIRED**  
so reducing lifetime service costs

**INBUILT MIXING VALVE**  
on AquaMax G390SS so you can adjust the hot water delivery to as much as 205L in an hour (depending on temperature chosen)\*

\*NOTE: the inbuilt mixing valve is not an approved temperature limiting device. Applications requiring tempering to comply with AS3498 must have a tempering valve installed in accordance with AS3500.4



“Giving you more in  
Hot Water”