

Zip Hydroboil™

Installation and Operating Instructions



- 303062 Zip Hydroboil 3 Litre White
- 303061 Zip Hydroboil 3 Litre Stainless Steel
- 305062 Zip Hydroboil 5 Litre White
- 305061 Zip Hydroboil 5 Litre Stainless Steel
- 307062 Zip Hydroboil 7.5 Litre White
- 307061 Zip Hydroboil 7.5 Litre Stainless Steel

Contents

Read These Warnings First.....	3
Installation Requirements.....	3
Installation Procedures	4
Step 1 – Positioning.....	4
Step 2 – Fastening.....	4
Step 3 – Connecting.....	5
3.1 Plumbing	5
3.2 Venting.....	5
3.3 Electrical.....	6
Step 4 – Installing Filter Guide	6
Step 5 – Installing Case Cover	7
Step 6 – Installing filter	7
Step 7 – Commissioning - Filter Flush	8
Step 8 – Commissioning - Calibration	9
Operating Procedures.....	10
Menu Operation.....	11
Wall Mounting Template Dimensions	17
Problem Solving.....	18
Earthing Continuity Verification.....	19
Filter Replacement	19
Spare Parts.....	20
Exploded View Diagram	21
Cleaning.....	22
End of life disposal.....	22
Contact Details.....	24

Note:

All plumbing must comply with the relevant parts of AS/NZS 3500

All electrical must comply with the relevant parts of AS/NZS 60335/3000



This appliance is not intended for use by persons (including children) with reduced physical, sensory or mental capabilities, or lack of experience and knowledge, unless they have been given supervision or instruction concerning use of the appliance by a person responsible for their safety. For products sold in Europe, this appliance can be used by children aged from 8 years and above and persons with reduced physical, sensory or mental capabilities or lack of experience and knowledge if they have been given supervision or instruction concerning use of the appliance in a safe way and understand

the hazards involved. Children should be supervised to ensure that they do not play with the appliance. Cleaning and user maintenance shall not be made by children without supervision.

This appliance is intended to be used in household and similar applications such as

- Staff kitchen areas in shops, offices and other working environments;
- Farm houses and by clients in hotels, motels and other residential type environments;
- Bed and breakfast type environments;
- Catering and similar non-retail applications.

Read These Warnings First



Please read all installation requirements, installation procedures and precautions before installing any Zip Hydroboil instant boiling water heater.

Never attempt to install any Zip Hydroboil instant boiling water heater without reading all of the applicable instructions.

In some hard water areas where mineral scale accumulation in the boiling chamber of the Zip Hydroboil may become a problem, consideration should be given to the maintenance required. A suitable form of water treatment may be necessary.

The cold water supply to this appliance must be potable and fall within your local authority's guidelines.

All plumbing connections must be made in accordance with local regulations.

The Zip Hydroboil instant boiling water heater is not intended for use by young children or infirm people without supervision.

Young children should be prevented from having access to ensure that they are not able to use or play with the heater.

This appliance must be earthed. If the power supply cord is damaged it must be replaced by a Zip authorised agent or a qualified electrician.

Do not remove the cover of the heater under any circumstances without first isolating the heater from the power supply.

Do not use strong, corrosive or abrasive cleaners to clean the case of the heater.

Frost protection: If this heater is located where ambient air temperature could fall below 5°C when the heater is not in use, do not turn off the appliance electrically. This safeguard does not offer the same protection to the connecting pipework and fittings.

The ambient temperatures this unit must operate within is 5°C - 50°C.

This heater is intended only for indoor use and should never be installed outdoors or be exposed to the elements of nature.

This unit must not be positioned in an area that may be cleaned by a water jet. This unit must not be cleaned by a water jet.

Installation Requirements

Before installing, ensure that the following are available:

- a) Sufficient space to position the heater so there is at least 100 mm clearance above the heater for service access, 150 mm to its left and 20 mm to its right – the tap outlet must be positioned at least 215 mm above a draining board or drip tray.
- b) Standard 220- 240 volt power cable positioned as shown on the paper mounting template for concealed connection from the rear of the heater to the terminal block within the heater, OR a standard 10 amp 220- 240 volt power outlet on the wall within 1500mm of the heater. This switch must provide all-pole disconnection and a contact separation of at least 3 mm installed in accordance with wiring rules.
- c) Cold water supply with a minimum working pressure of 70 kPa and a maximum working pressure of 700 kPa connected via an isolation valve.

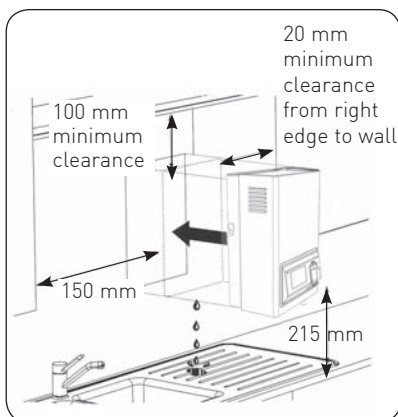
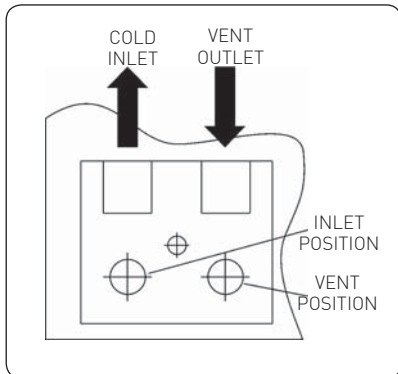
Installation Requirements

Approximate Weight When Filled

3.0 Litre models	12.5 kg
5.0 Litre models	16.5 kg
7.5 Litre models	20.5 kg

- d) Outlet drainage to a sink draining board or to a drip tray.
- e) Access to drainage from a vent situated at the base of the heater.
- f) In all installation instances the walls of the heater must be vertical and the base horizontal, there can be no exceptions to this rule.

Installation Procedures



Before You Begin

Refer to the mounting-hole template on page 17.

Read the installation and operating instructions completely.

Decide whether to install with concealed or exposed plumbing and/or electrical connections. Concealed connections are preferred for superior appearance.

Step 1 – Positioning

Position the heater so the tap will drain on to a draining board or drip tray.

Position the base of the tap to be not less than 215 mm above the draining board (height should be increased only if essential for filling larger vessels).

Provide clearance for service access of not less than 100 mm top, 150 mm left, 20 mm right.

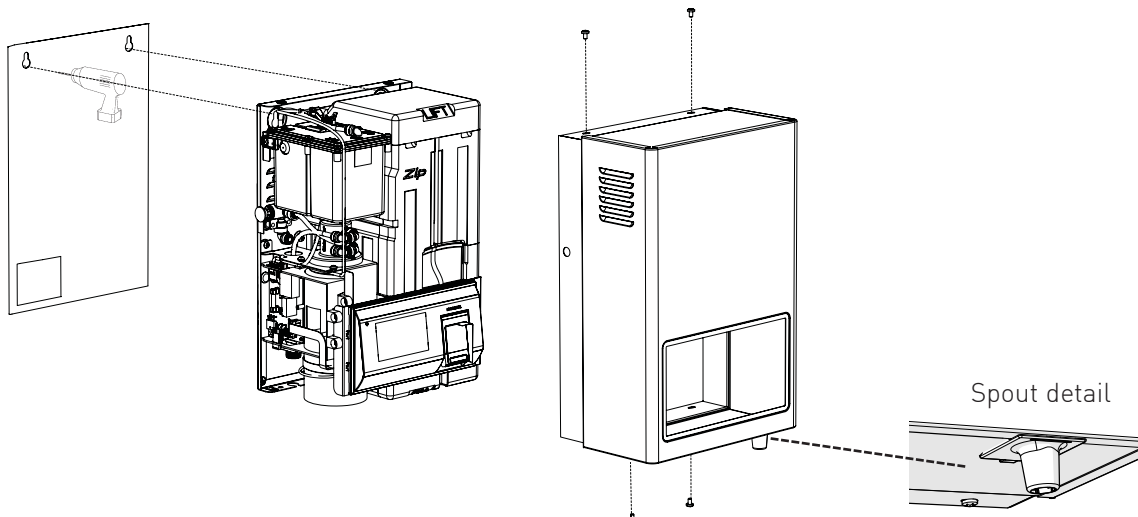
Mark corner positions for the heater on the wall so as to position the paper mounting-hole template.

Step 2 – Fastening

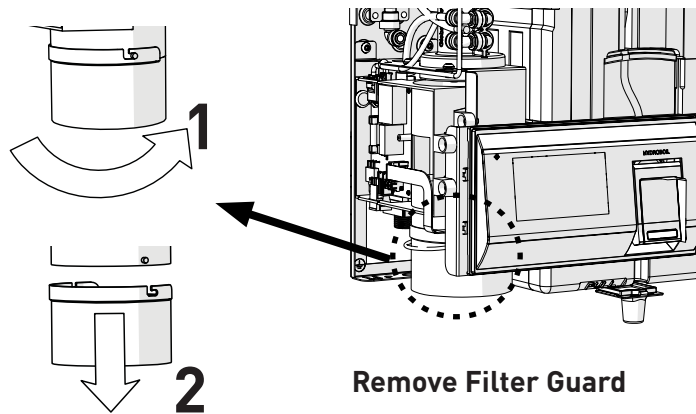
Position mounting-hole template on wall and drill holes where shown.

Drill holes for water inlet, vent outlet and wiring if rear access is intended.

Remove cover fastening screws from heater and lift whole cover off heater.



Installation Procedures



Remove Filter Guard

Remove filter guide as shown in picture above.

Install plumbing and wiring and prepare pipe ends and wiring ends as shown.

Screw heater chassis to the wall using screws or bolts suited to the wall.

Screws or bolts must be capable of supporting the heater weight when filled.

Step 3 – Connecting

THE FOLLOWING PROCEDURE IS TO BE DONE BY AN AUTHORISED INSTALLER ONLY.

3.1 Plumbing

For exposed plumbing connection, connect the cold water inlet pipe from the base of the heater directly to the 12.7 mm compression fittings.

For concealed plumbing connections, connect the cold water pipe through the rear of the chassis using a 12.7 mm capillary elbow (# 63 Swivel Elbows).

Cold water pipes must be flushed before connection to the inlet. Any clogging due to sediment or fines will adversely affect the operation of the heater.

It is recommended that the heater be installed with a stop cock which allows it to be isolated from the mains supply for servicing.

Water pressure requirements:

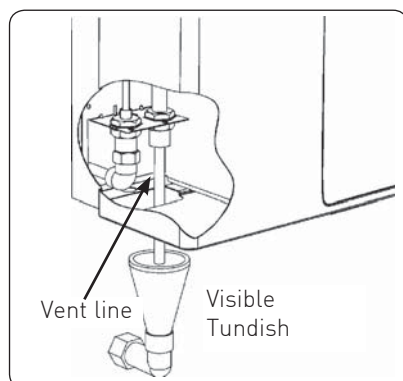
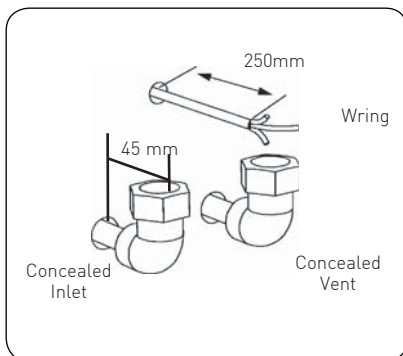
Minimum - 70 kPa maximum - 700 kPa.

A 500kPa pressure limiting valve is part of the Hydroboil water inlet assembly.

3.2 Venting

A vent at the base of the heater must be plumbed to a safe visible location as, under certain conditions, it may discharge cold or boiling water and/or steam.

For exposed vent plumbing, connect vent outlet from the base of heater to a 12.7 mm pipe which has a continuous fall, is no more than 3 metres



Installation Procedures

long, has no more than 3 right angle bends, and visibly discharges to a waste water drain.

For concealed vent plumbing, connect plumbing to the vent outlet from the heater rear using a elbow protruding 45 mm from the wall.

Alternatively attach a tundish to the wall as shown and plumb away to waste.

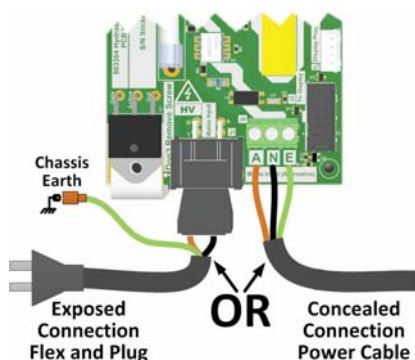
Note: when routing the plumbing for the vent / tundish installed and mains inlet line, ensure you do not obstruct filter access for filter replacement.

3.3 Electrical

For an exposed electrical connection, the pre-fitted flex and plug cable is plugged into the PCB as shown. Use a standard GPO power outlet within 1500 mm from the heater with adequate power for the unit.

For a concealed electrical connection, disconnect the pre-fitted flex and plug cable at the PCB connector and discard. Connect the concealed power cable through the rear access opening to the green terminal block on the PCB.

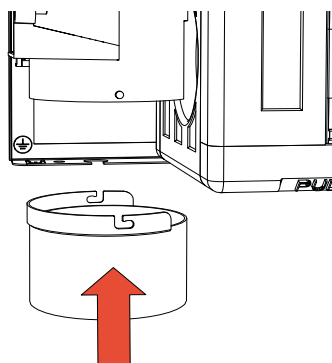
Check that the earth is connected through the PCB to the chassis with an ohm meter.



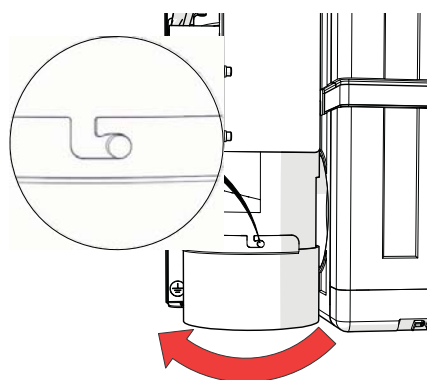
Warning: Do not connect both options. It is essential that the flex and plug cable is removed from the PCB if the concealed connection is used. Otherwise the GPO plug will become live.

Step 4 – Installing Filter Guide

Assemble the filter guide provided with the unit, make sure it is locked in position, then put the cover back on.



1. Push the filter guide upwards



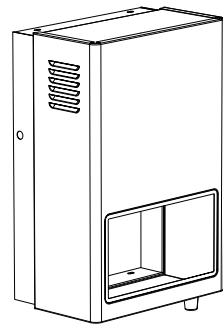
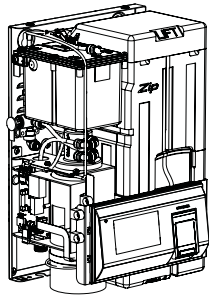
2. Rotate anti-clockwise until locked

Installation Procedures

Step 5 – Installing the Cover

Fit the case wrapper to unit as shown in the picture below.

Note, make sure the filter guide has already been installed before installing the cover.



1. Fit cover to the heater.



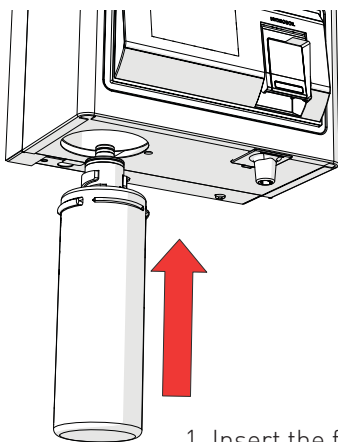
2. Use screws and bolts provided to fasten case wrapper onto unit.

Special Notes

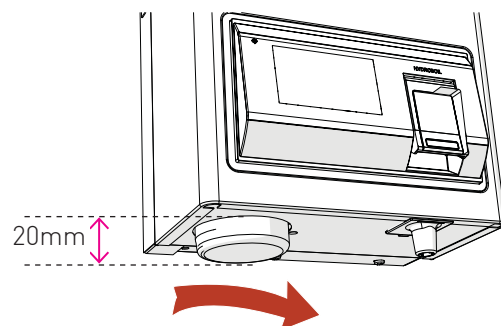
Ensure the silicon outlet tube is correctly positioned within the outlet nozzle. Failure to do this may cause internal flooding.

Step 6 – Installing Filter

To install a filter, insert the filter into the base of the unit as shown and turn 90° until a click or stop point is reached, see images below. There should be approximately 20mm protruding when installed.



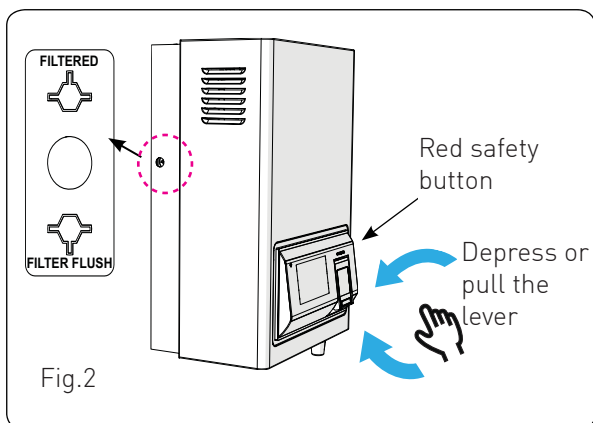
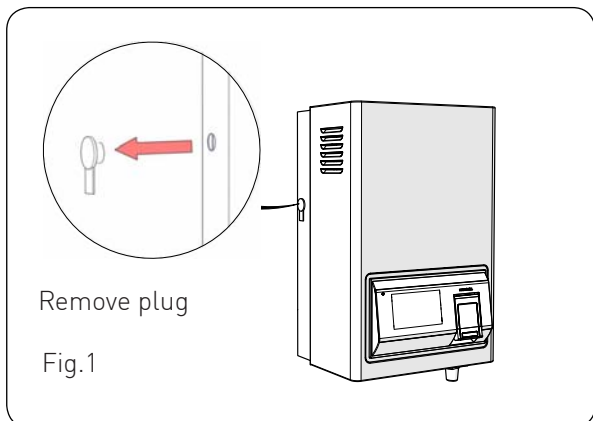
1. Insert the filter



2. Turn the filter clockwise through 90° until fully engaged

Installation Procedures

Step 7 – Commissioning - Filter Flush



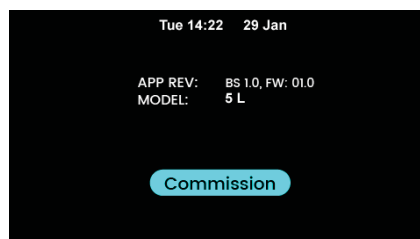
Remove the plug on the left side of the unit and check that the filter flush valve is in the correct position to perform a filter flush, as shown in fig.1.

Use a flat blade screw driver or 8mm allen key and rotate the filter flush valve 180° either way to the **"FILTER FLUSH"** position as shown in fig.2.

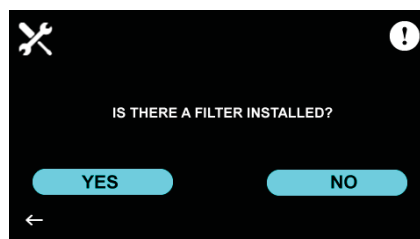
Turn the mains water on and check for water leaks.

Open the dispense tap outlet (note it may have the safety lock feature enabled). Push the red safety lock button on the right hand side of the unit while pulling the tap lever backwards to latch it open (see fig.2 and next section for operating procedure).

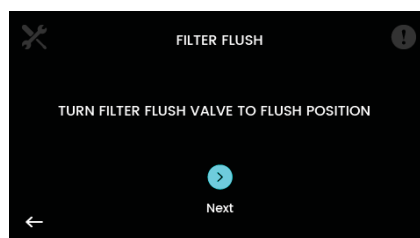
Turn the power on (the element will not be turned on at this stage, there is no need to have water covering the element yet).



Touch the blue "Commission" button to commence.



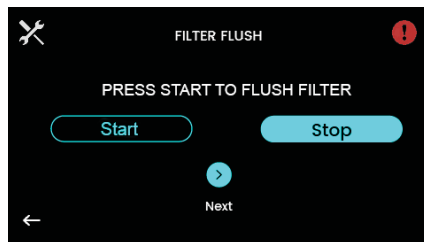
Touch "Yes" for the internal filter installation option.




It is important for the valve to be in the "Filter Flush" position to prevent water entering the boiling tank.

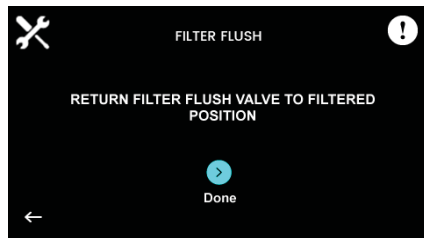
Touch  [Next].


Installation Procedures



Touch "Start" and allow 5 litres of water to flow through the filter (this takes about 10min of flushing). Water must trickle out of the vent outlet (at 0.5L/min). Touch "Stop" when complete. Note there will be no water flow if a filter is not installed.

Touch  [Next] after flushing.

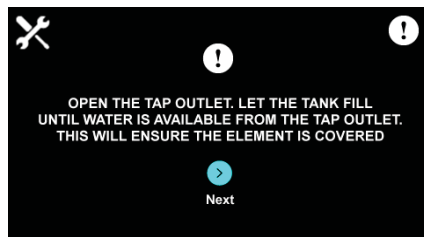


Return the filter valve to the "Filtered" position (fig 2) and then touch  [Done].

Continue into the following section (Step 8).

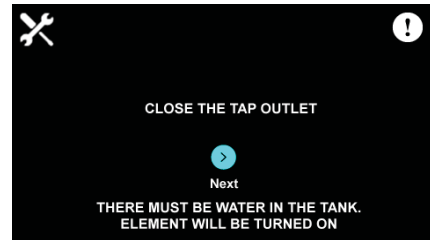
Step 8 – Commissioning - Calibration

This follows on from Step 7 (above).



Ensure the dispense tap outlet is open (push safety lock button and pull for the latched open position – fig 2). Allow the tank to fill until water is available at the dispense tap outlet. Correct the flush valve position if water comes out of the vent.


With water available touch  [Next].

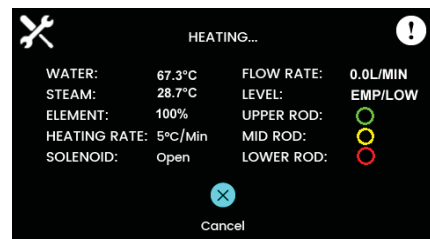


Once water is available, close the dispense tap outlet.



Warning: The element will be turned on at the next step. Failure to ensure water is not available at the tap outlet will burn the element.

Then touch  [Next] to begin the calibration process.



This screen shows the boiling calibration status while it heats the water to boiling point. The water temperature is shown in the first parameter.

It takes about 5 minutes to boil the water. When calibration is complete, the normal operating home screen will appear (see next section on menu operation).

The tank will then commence filling and heating. Boiling water will be maintained thereafter. Initial heating and filling periods are shown in the table below.

Inlet water temperature	15°C	10°C
3.0 Litre models	16 min	17 min
5.0 Litre models	16 min	17 min
7.5 Litre models	23 min	24 min

Operating Procedures

Tap Operation

Safety feature.

Zip Hydroboil has a unique safety device designed to reduce the incidence of accidental operation of the tap. The tap can be "Locked" to prevent the Hydroboil from dispensing hot water.

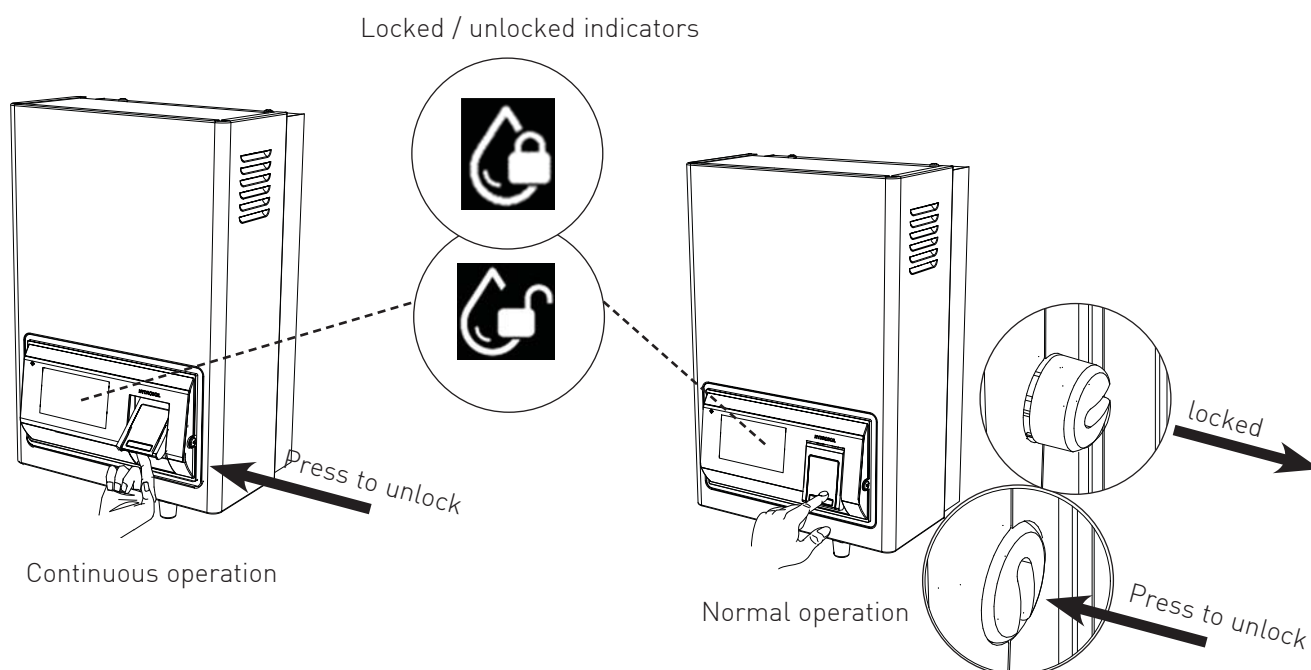
In order to "lock" the tap, ensure the safety button is protruding from the right hand side of the control panel and the locked indicator is shown.

This can be achieved by pressing the button and simultaneously rotating it until the groove allows the button to pop out. Once the button is in the extended position, the tap will be "Locked" and unable to dispense hot water (unless the button is pressed).

Disengage safety feature.

Press and simultaneously rotate (aprox 90 degrees) the safety button on the right hand side of the control panel, until it latches in the closed position, and the unlocked indicator is shown.

Warning: The unit is now capable of dispensing boiling water without the safety feature.



Dispensing Boiling water:

Zip Hydroboil is fitted with a safety, two-way cool-touch safety tap for instant boiling water.

Normal operation (for filling cups and small containers)

To activate the tap, press the safety button on the right side of the control panel and while holding the button in, gently push the lower end of the tap paddle inwards and boiling water will flow until the tap paddle is released.

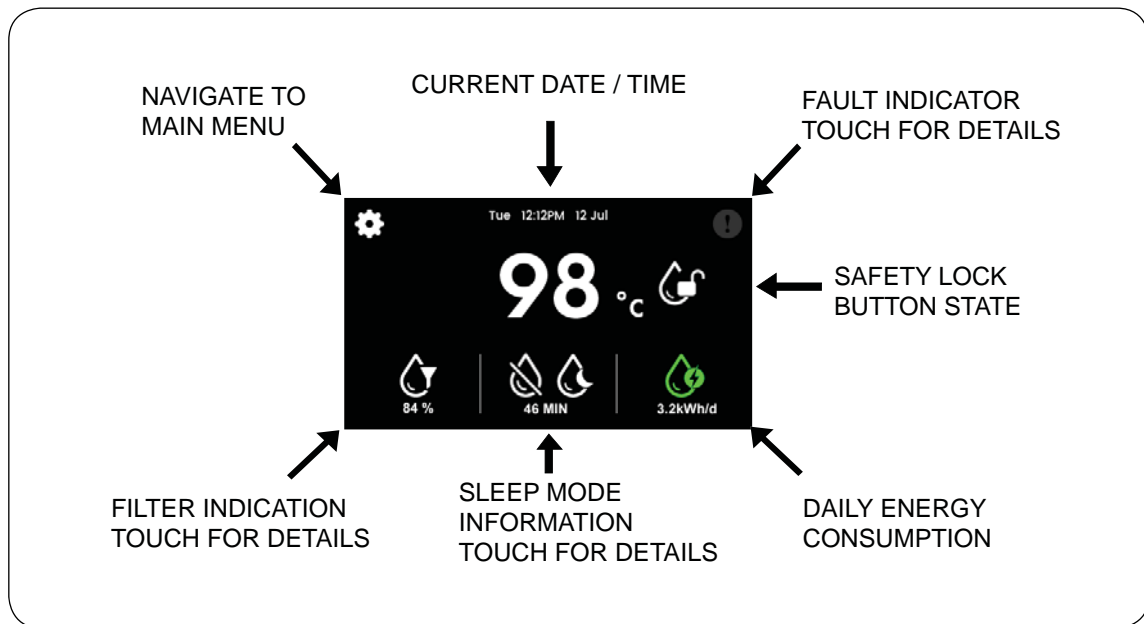
Continuous operation (for filling, tea pots, saucepans and large containers)

Press the safety button on the right side of the control panel and while holding the button in, Lift the tap paddle until it locks into a horizontal position, the button can now be released and boiling water will flow until the paddle is returned to its normal vertical position. This operation allows a vessel to be filled without holding your hand where it may be affected by steam.

Menu Operation

1.HOME SCREEN

The Zip Hydroboil has a touch screen feature for easy setup and operation adjustment.



Menu Navigation

- | | |
|--------------------------------|--|
| Go to home page. | Page up/down (next data page). |
| Go to main menu/settings menu. | Increment/Decrement the selected item. |
| Previous page (go back). | Enabled/Disabled item. |
| Go to next/appropriate page. | Selected/Unselected item. |

Sleep Mode

Sleep When

- Sleep if no water used (time shown)
- Sleep when dark (after 10s of darkness)
- Sleep at time shown
- Sleep disabled (no sleep trigger)
- Sleep after time remaining

Wake When

- Wake when water is used
- Wake when it is light
- Wake at time shown
- Force wakeup (sleep override). Unit will remain awake for the time shown.

Touching these icons will show more details, and allow quick navigation to the sleep mode settings (see sections 2.3 and 2.4).

Filter Indication

- Remaining filter life (% shown).

This is the lower value based on the litres left or days left. The icon will turn red and show "Replace" when expired (0%).

Touching this icon will show more details, and allow quick navigation to the filter settings page (see section 2.4).

Menu Operation

Safety Lock Button State

 Locked (cannot dispense water)

 Unlocked (can dispense water)

This is the red lock button on the right side of the tap, see page 10 "Operating Procedure".

Energy Usage

 Energy used today (kWh/d)

The amount of energy used for the given day is shown below the icon.

It accumulates through the day and is reset to zero at midnight.




Fault Indicator

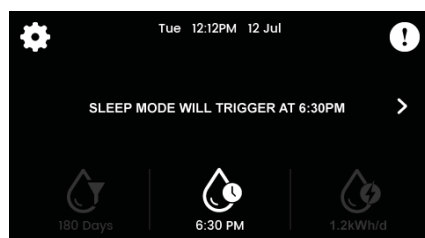
Touch the indicator for further information.

 No faults.

 (Shown Red) Faults exist.

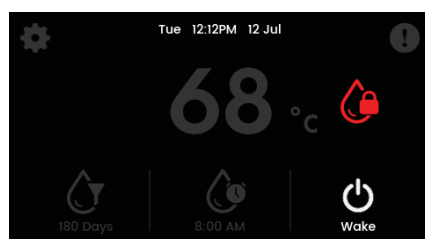
1.1 HOME SCREEN – SUB MENUS

Touch the home screen sleep mode  or filter  icon to show the extra information screen for 10 seconds. Touch the  [Next] button to jump to the appropriate settings menu.




EXTRA INFORMATION SCREEN

When the unit is asleep, the screen will be grey.



SLEEP SCREEN

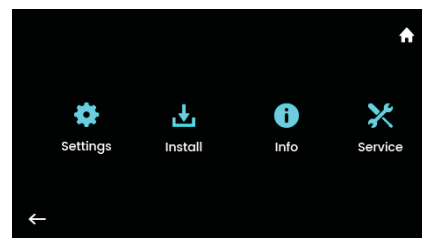
Touching the  [Wake] button or dispensing water will restart (wake) the system for 30mins.



The remaining wake time is shown below the sleep mode icon.


2 MAIN AND SETTINGS MENU

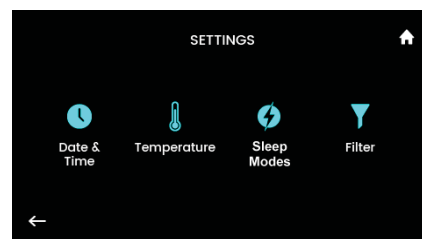
From the home screen touch the  button.

The following main menu will be shown.






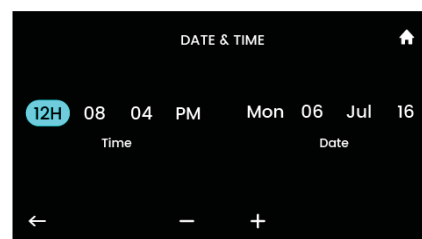
Note: From any menu, touch the  [Home] button to go to the home screen. Touch the  [Back] button to go to the previous menu.

From the main menu above, touch  [Settings] for the following page.



2.1 SETTINGS – DATE & TIME

From the home screen touch , ,  [Date & Time]



Touch each date/time value to highlight it.

Touch the ,  (Inc/Dec) to adjust the value.




Use  to save and go back.

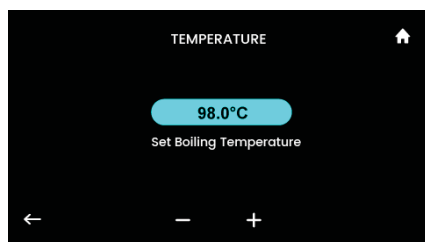
The current time is shown on the home page.

Menu Operation

2.2 SETTINGS – TEMPERATURE

The water temperature can be adjusted as desired. The default value is 98.0°C. A higher value will consume more energy and may cause unwanted steam. For values above 95°C a boiling calibration is recommended (see section 3.2).

From the home screen touch    [Temperature]






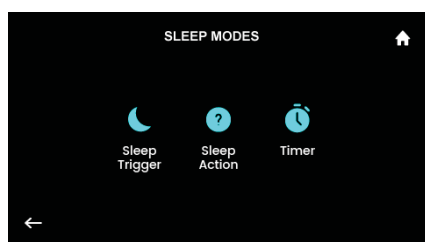
Touch the   (Inc/Dec) to adjust the water temperature.

2.3 SETTINGS – SLEEP MODES

Zip Hydroboil can be programmed to automatically save energy when not in use.

For example, when not used for 2 hours, when it is dark (at night), or at programmed times of the day/week. These are called sleep modes.

From the home screen touch    [Sleep Modes]



- **Sleep Trigger** - Choose the event that activates the sleep mode.
- **Sleep Action** - Choose between 68°C or no heating, when the unit is asleep.
- **Timer** - Choose the time and day the unit sleeps if the corresponding sleep trigger is set.

2.3.1 SETTINGS – SLEEP MODES – SLEEP TRIGGER

This is the event that causes the unit to begin sleeping (save energy).

When the unit is asleep, the home page will be shown in dark grey and the appropriate sleep icon will be shown (see sleep screen in section 1.1).

From Home screen touch     [Sleep Trigger]







Touch the required trigger (shown as ).

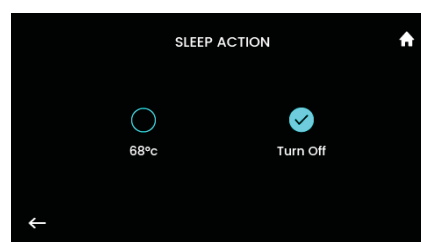
- **Off** – The unit will not enter sleep mode.
- **Timer** – It will sleep according to the on/off timer settings (see section 2.3.3).
- **Ambient Light** – It will sleep when the room is dark (see section 3.1).
- **2 Hours No Usage** – It will sleep after water has not been dispensed for 2h.
- **Usage & Light** – It will sleep when water has not been dispensed for 2h or when it is dark.

Note: The dark and light thresholds are set using light calibration (see section 3.1).

2.3.2 SETTINGS – SLEEP MODES – SLEEP ACTION

This sets the type of heating (water temperature) when the unit is asleep (energy saving).

From the home screen touch     [Sleep Action]



- **68°C** – The water temperature setting will be reduced to 68°C when asleep.
- **Turn Off** – The water will not be heated when asleep.

2.3.3 SETTINGS – SLEEP MODES – TIMER

This determines the time and week day to automatically wake and sleep to save power.

Remember to also choose “Sleep Trigger” as “Timer” to use this option (see section 2.3.1).

Menu Operation

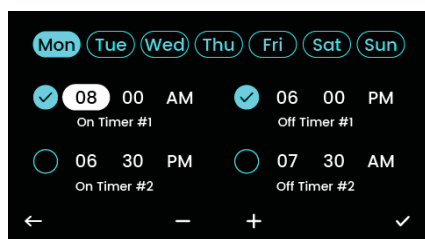
From home screen touch     [Timer]







The sleep on/off times can be conveniently adjusted in groups (Everyday, Weekdays, and Weekends). After adjusting a group, an individual day can be adjusted or checked by choosing the "Individual" days option.



- ▶ **Everyday** – Set all 7 days simultaneously.
- ▶ **Weekdays** – Adjust Mon to Fri simultaneously.
- ▶ **Weekends** – Adjust Sat & Sun simultaneously.
- ▶ **Individual Days** – Adjust/Check each day separately.

Choose one of the four options (groups) to show the following screen.





For individual days option, touch the week day to be adjusted.

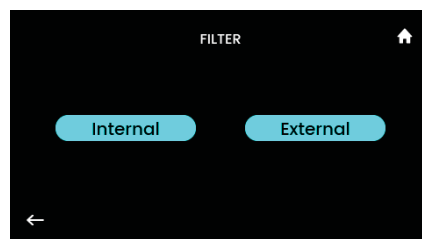
Enable the desired timer with the  [Tick]. Touch an item to highlight it and use the  and  to adjust the values. Use the  [back] to show the confirmation screen.

On the confirmation page, choose  [Continue] to apply or  [Cancel] to delete the changes.

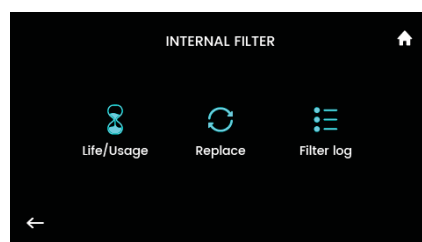
2.4 SETTINGS – FILTER

The unit automatically tracks the filter usage (remaining life). It can be installed with an external filter, however normally only the internal filter is used.

From the home screen touch    [Filter]






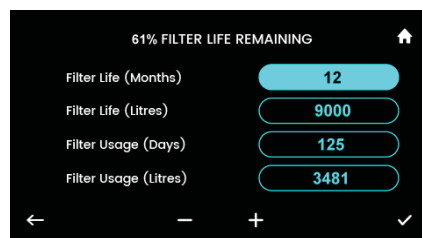
Choose which filter setting to adjust (Internal or External). The following applies to either filter.






- ▶ **Life/Usage** – Adjust how long the filter lasts or adjusts how much has been used.
- ▶ **Replace** – Steps required for filter replacement.
- ▶ **Filter Log** – View filter replacement history.




2.4.1 SETTINGS - LIFE/USAGE

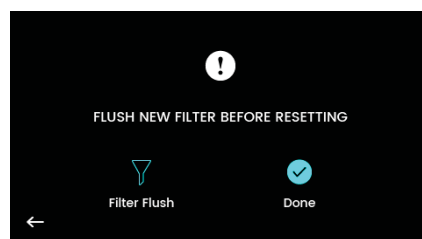
From the home screen touch    [Life/Usage].




Use the  and  to set each value. Note: the filter usage can be reset to zero with a  [Replace] operation. The usage can be adjusted here as well.

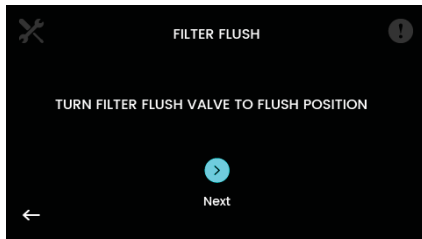
2.4.2 SETTINGS - REPLACE


From the home screen touch    [Replace].

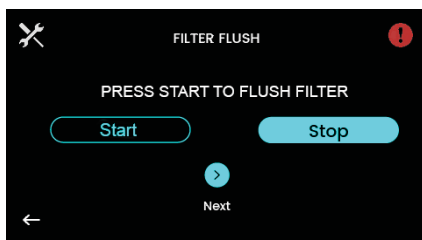


Menu Operation

After installing a new filter, touch  [Flush Filter] to enter the flush sequence (refer to the Filter Flush diagram on page 8).

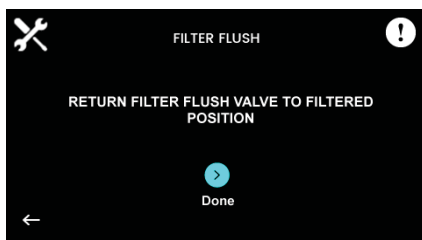



Set the valve on the side of the unit to the “Filter Flush” position (fig.2 on page 8) and touch  [Next]

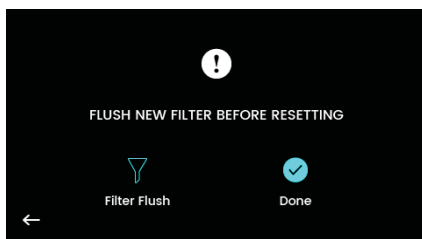


It is important for the valve to be in the “Filter Flush” position to prevent water entering the boiling tank. Touch “Start” and allow 5 litres of water to flow through the filter (this takes about 10min of flushing). Water must trickle out of the vent outlet (at 0.5L/min). Touch “Stop” when complete.

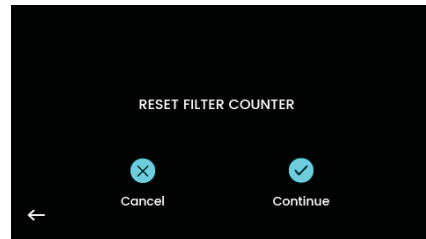
Touch  [Next] after flushing.




As prompted, return the filter valve to the “Filtered” position (Fig.2 on page 8) and then touch  [Done].






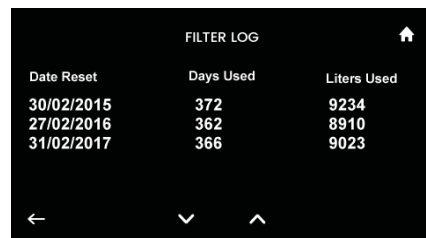
Touch  [Done] after flushing is completed.



Press  [Continue] to reset the filter counter.

2.4.3 SETTINGS - FILTER LOG

From the home screen touch    [Filter Log].

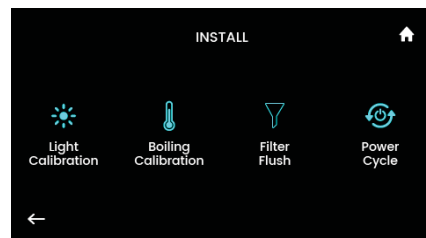


Date Reset	Days Used	Liters Used
30/02/2015	372	9234
27/02/2016	362	8910
31/02/2017	366	9023

This is a record of when the filter was changed.

3 INSTALL MENU

From the home screen touch    [Install].



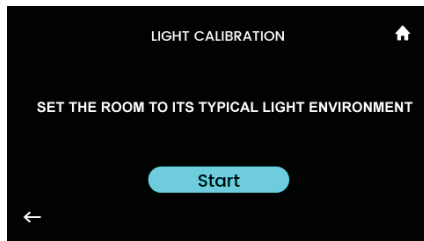
3.1 INSTALL – LIGHT CALIBRATION

This action adjusts the darkness threshold.

Light calibration is performed at normal (daylight) light level. A suitable darkness threshold is calculated and stored for night time low power mode (sleep mode).

From home screen touch    [Light Calibration].

Menu Operation



Before pressing start, ensure the unit is in its typical light environment and the front panel is not covered.

Touch "Start". Light calibration takes about 5 seconds.

After calibration, press [Back] or [Continue].

Remember to also choose the "**Ambient Light**" sleep trigger option (see section 2.4.1). Light levels can be checked from the Home screen when darkening the room. After 10 seconds the screen will go grey and show the "**SLEEP SCREEN**" (see section 1.1).

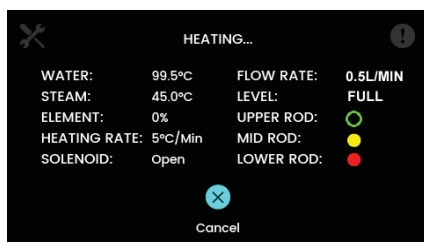
3.2 INSTALL – BOILING CALIBRATION

This automatically corrects for boiling point differences at each installation site. The unit was calibrated by the installer at installation; however the installation environment may have changed requiring recalibration of the boiling point.

Incorrect boiling calibration points may cause excessive steam vent releases, or high energy usage.

Boiling calibration is recommended when the temperature setting is close to 100°C (section 2.2).

From the home screen touch , , [Boiling Calibration]

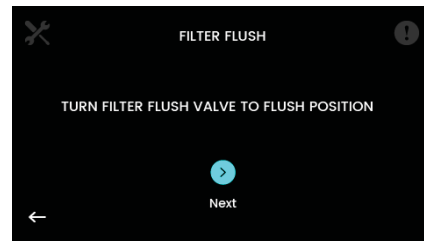


The unit will heat the water during calibration. This may take several minutes depending on the water temperature. When it completes the install menu will be shown.

3.3 INSTALL – FILTER FLUSH

This allows the filter flush steps to be performed.

From the home screen touch , , [Filter Flush]



Follow the same sequence provided in section "2.4.2 Replace" for the flushing steps.

It is logical to reset the filter counter if the filter was replaced (see 2.4 SETTINGS – FILTER).

However in this case choose "Replace" then "Done".

3.4 INSTALL – POWER CYCLE

This will perform a power reset should the Zip technical support recommend this.

From the home screen touch , , [Power Cycle].

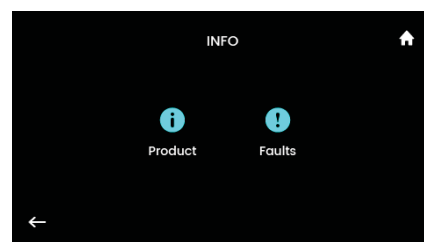
Then when prompted choose [Continue].

The system will reset and the screen will return to the home screen. No parameters will be changed.

4. INFO MENU

This provides additional information about the unit.

From home screen touch , [Info]



Touch the item for more information.

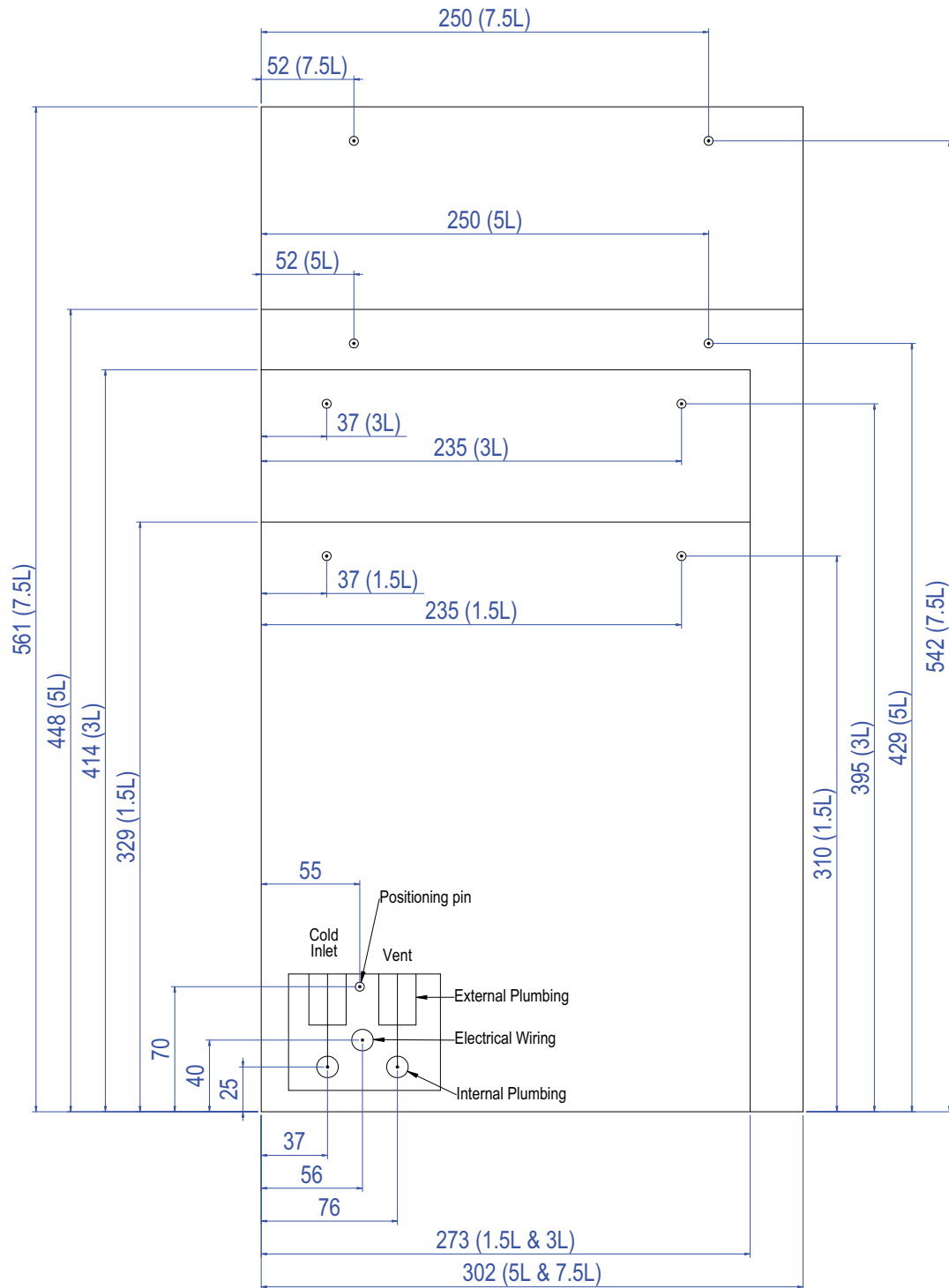
Product – provides information about the device.

Faults – aids in system diagnostics. Two options are provided. "Active" faults are those that are occurring now. "Recent" is a record of previously recorded faults.





5. SERVICE MENU

The service menu is used by technicians only for diagnostic purposes.

Wall Mounting Template Dimensions



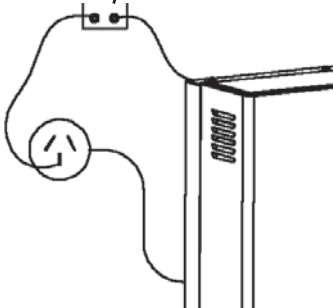
Problem Solving

Symptom	Possible Cause	Solution
Fails to dispense water.	<p>Incorrect filter flush valve setting.</p> <p>Incorrect filter insertion.</p> <p>Water isolating valve turned off.</p> <p>Blocked filter, blocked meter tube, Blocked strainer, solenoid fault, level sensor fault, faulty electronics.</p>	<p>Check filter flush valve position (see step 7, page 8).</p> <p>Check filter is inserted correctly (see step 6, page 7).</p> <p>Check water supply valve.</p> <p>Contact Zip authorised agent.</p>
Water not boiling.	<p>Incorrect temperature setting.</p> <p>Incorrect sleep mode setting.</p> <p>No power.</p> <p>Faulty/dislodged temperature sensor, faulty element, faulty cutout, faulty electronics.</p>	<p>Check temperature setting (see section 2.2*).</p> <p>Check sleep mode settings (see section 2.3*) or reset settings from service menu.</p> <p>Check power supply.</p> <p>Contact Zip authorised agent.</p>
<p>Runs out of boiling water and fails to refill.</p> <p>Outlet tap drips.</p> <p>Overflow from vent.</p> <p>Excessive steam from vent.</p> <p>Power "on" but no heat.</p> <p>Overload repeatedly tripping with excessive steam.</p> <p>Overload repeatedly tripping without excessive steam.</p>	<p>Requires boiling calibration.</p> <p>Incorrect filter flush valve setting.</p> <p>Incorrect filter insertion.</p> <p>Internal adjustment.</p>	<p>Perform boiling calibration (see section 3.2*).</p> <p>Check filter flush valve position (see step 7, page 8).</p> <p>Check filter is inserted correctly (see step 7 page 7).</p> <p>Contact Zip authorised agent.</p>
Sleep/Wakes incorrectly when room is light/dark.	<p>Requires light calibration.</p> <p>Incorrect sleep modes settings.</p>	<p>Perform light calibration (see section 3.1*).</p> <p>Check sleep mode settings (see section 2.3*) or reset settings from service menu.</p>
Dispense tap locked closed (cannot open tap).	Safety lock (red button on right side) in "locked" position.	Press to unlock to allow dispense tap operation. See operating procedures (page 10)
Red  fault indicator shown	Touch  indicator for more information.	<p>Touch  indicator for more information.</p> <p>Power cycle the unit (wall power, or see section 3.4*).</p>
Replace  Filter shown in red	<p>Filter has expired (litres used or days used).</p> <p>Did not reset filter counter after replacing filter. Incorrect filter life settings.</p>	<p>Replace expired filter.</p> <p>After replacement, reset the filter counter (section 2.4*) or check the filter life settings (typically 12 months, 9000L).</p>

* Located in Menu Operation Chapter

Earthing Continuity Verification

If required, an earth continuity test can be performed by testing between the earth pin on the products lead and a exposed piece of metal on the case and the tap body.



Warning: this appliance must be earthed.

Following remedial service the earthing continuity of the heater must be checked by a qualified technician using an appliance tester, or continuity tester of accuracy Class 5 or better. Class 5 denotes an accuracy of 5% full scale deflection.

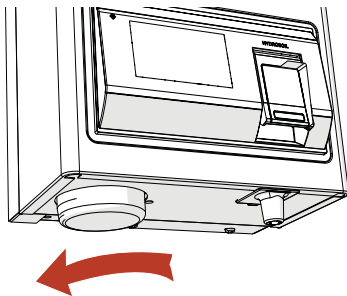
1. Isolate power supply.
2. Set meter to 0 ohm with leads connected together.
3. Connect one test lead to the earth pin on the three pin plug.
4. Connect the other test lead to a bare patch of metal (preferably on the edge) of the top of the cover, then to the front cover of the unit, and then to the tap.



Warning- the water may be boiling - show extra care.

5. Test that in every instance the electrical resistance does not exceed 1 ohm.

Filter Replacement



1. Turn the filter anti-clockwise.

Fig.1

NOTE: For safe operation, the filter cartridge should be replaced every 6-12 months, or earlier if you notice a persistent reduction in water pressure from the appliance or an unpleasant taste or odour in the water.

To Replace Filter:

- Turn the filter anti-clockwise (fig.1) and pull the cartridge down. Have an absorbent cloth ready as a small amount of water will be released as the filter is removed. The cartridge should release from the filter head.
- Replace with a new filter by gently pushing up, engaging the key and turning the filter clockwise until the filter clicks or locks into place.
- Perform the replace filter steps flush by following the instructions in section 2.4.2 on page 14.



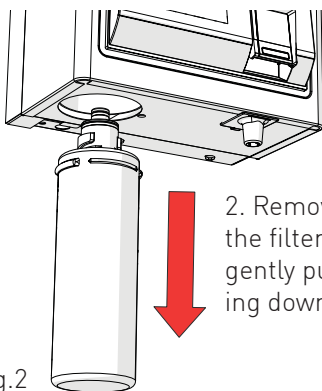
Warning! Not changing filtration cartridges when required, may cause the water to become biologically unsafe.

If the Zip Hydroboil is switched off for a long period of time (e.g. More than a weekend), run water through the outlet for at least 5 minutes before consumption.

Use only a Zip Filter in this product to ensure effective filtration and operation. Replacement filter cartridges can be obtained through plumbing suppliers or directly from Zip.

Filter replacement instructions are included with the filter cartridge spare part kits.

Dispose of the filter cartridge responsibly.



2. Remove the filter by gently pulling down.

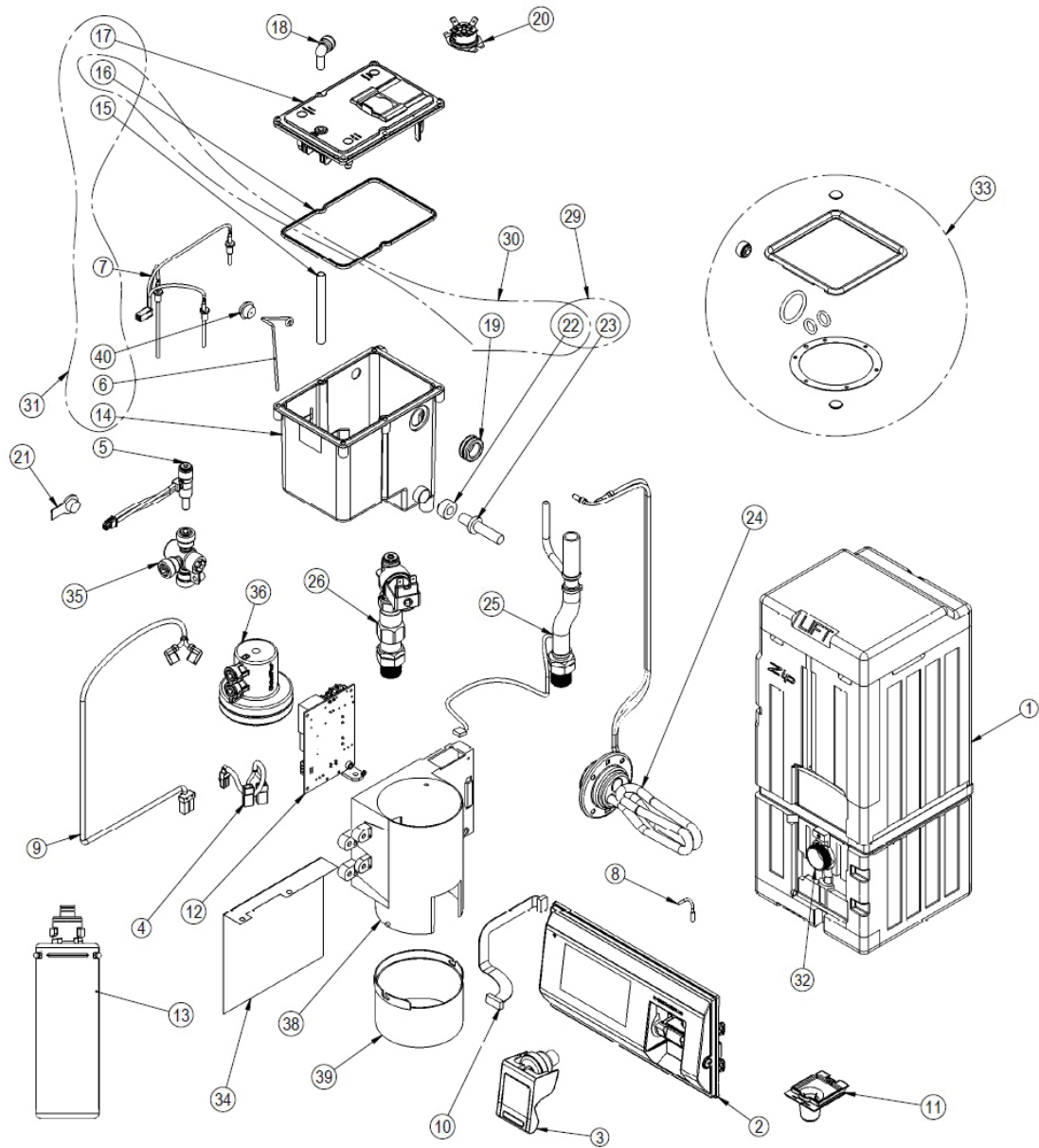
Fig.2

Spare Parts

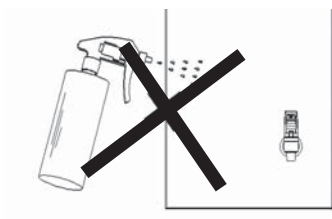
Item	Kit Number	Description
1	94496	HB 3 Ltr Tank Assy
	94497	HB 5 Ltr Tank Assy
	94498	HB 7.5 Ltr Tank Assy
2	94499	HB Fascia & PCB assy
	94500	HB Fascia & PCB assy Grey
3	94501	HB Tap assembly
4	94502	Loom, Solenoid
5	94503	Flow Meter
6	94504	Cistern Earth
7	94505	Level Sensors
8	91440	Hot Sensor / NTC
9	94449	Loom, PCB to Overload
10	94481	Ribbon Cable
11	94506	Nozzle Outlet
12	94507	PCB, HB Powerboard
13	93704	0.2mic MicroPurity Filter 2S
14	94454	Cistern Tank
15	94508	Tube, Cistern Inlet
16	94456	Cistern Gasket
17	94509	Cistern Lid HB
18	93118	Elbow Stem 1/4"
19	90100	Grommet, Cistern to Tank
20	94458	Overload

Item	Kit Number	Description
21	94459	Side release plug
22	94460	Seal transfer tube
23	94510	Metering Tube
24	90045	Element assy 1500W 1.5 & 3
	90085	Element assy 2400W 5 & 7.5
25	94484	Bush Vent assy 3 ltr
	94485	Bush Vent assy 5 ltr
	94486	Bush Vent assy 7.5 ltr
26	94511	Inlet assy
30	94456	Cistern Gasket kit
31	94454	Cistern assy
32	94513	Tap Outlet
33	94473	Hot Tank Gasket kit 1.5 & 3 Ltr
	94473	Hot Tank Gasket kit 5 & 7.5 Ltr
34	94490	PCB Splash Guard
35	94491	Filter Flush Valve
36	94492	Filter Head Kit (no Bracket)
37	94377	Filter Plug
38	94493	PCB & Filter Bracket
39	94494	Filter Guide
40	94495	Grommet

Exploded View Diagram



Cleaning



Cleaning Case

Do not use strong, corrosive, spray or abrasive cleaners. Clean the case with a soft cloth or sponge and mild soapy water.

End of life disposal

In order to help preserve our environment we ask that you dispose of this product correctly. Please contact your local city council for collection centre details.

NOTES

Contact Details

Head Office

Zip Heaters (Aust) Pty. Ltd.
ABN 46 000 578 727
67-77 Allingham Street
Condell Park NSW 2200
Postal: Locked Bag 80
Bankstown 1885 Australia

Website: www.zipwater.com
Telephone (02) 9796 3100
Free Call 1 800 638 633

As Zip policy is one of continuous product improvement, changes to specifications may be made without prior notice. Images in this booklet have been modified and may not be true representations of the finished goods.

The standard cup referred to in this publication is 167 ml (6 fl oz).

© 2017 Zip Heaters (AUST) Pty. Ltd. All Rights Reserved.

The terms "Zip", "Hydroboil", "Autoboil", "Econoboil", "Power-Pulse", "GlobalPlus", "MicroPurity" are trademarks of Zip Heaters (AUST) Pty Ltd.

Products described in this publication are manufactured under one or more patents and further patent applications are pending.

One or more products described in this publication are also registered designs of Zip Heaters (AUST) Pty Ltd.

This user manual has been written according to application firmware version 1.0. Please check the following website for the latest user manual:

<https://www.zipwater.com/>

